

## Generating Quality Print Output from Flare or Blaze

Matthew Ellison  
matthew@ellisonconsulting.com

The Conference for  
Software User Assistance



Matthew Ellison  
Consulting

## What are MadCap Flare and Blaze?



### Flare:

- Authoring tool for creating online Help and printed documentation
- XHTML editor
- XML-based project files
- Strong single-sourcing features (conditions, snippets, targets, medium-based styles)

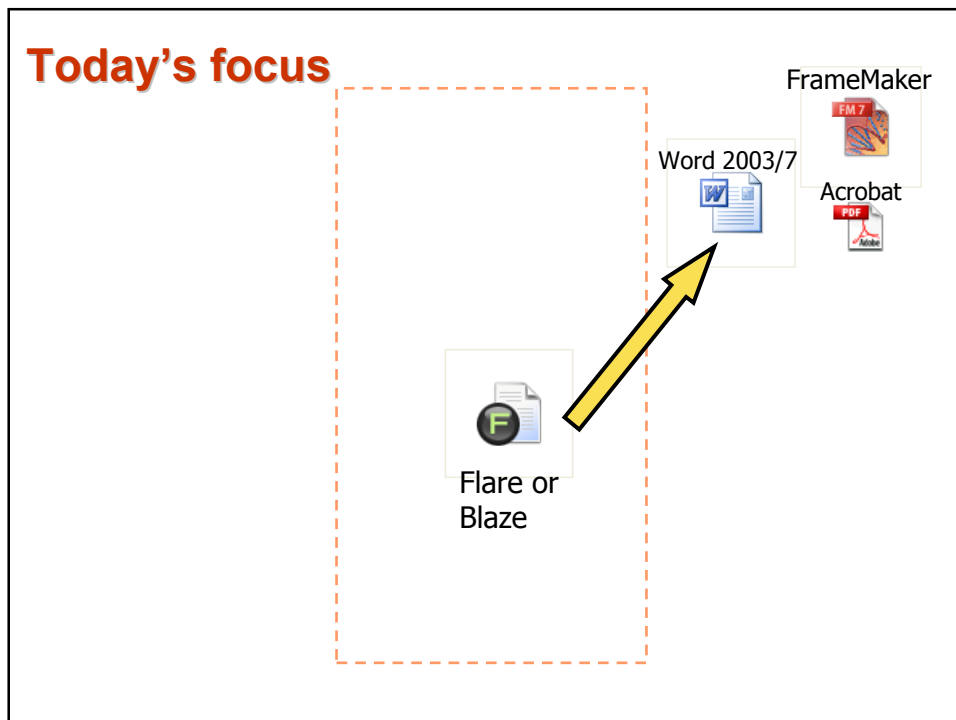
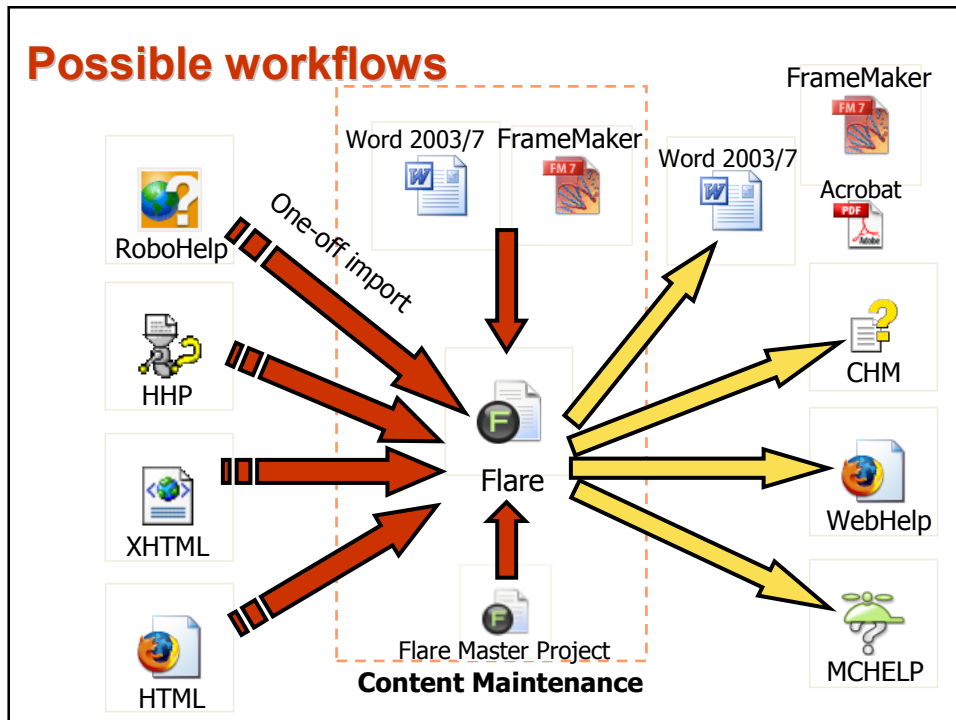


### Blaze:

- Same, but without the online Help targets

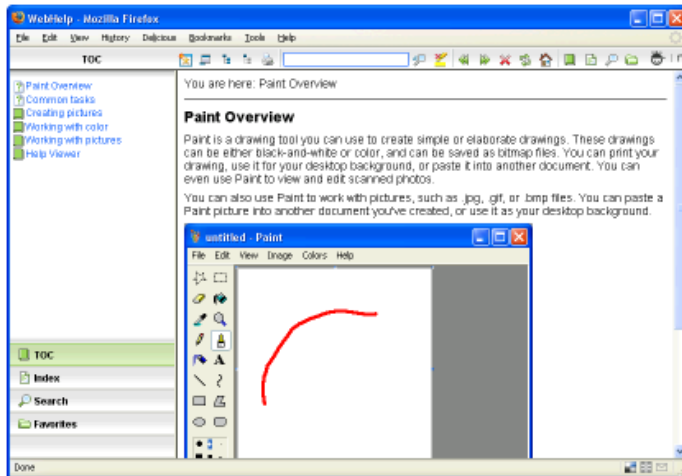
Matthew Ellison  
Consulting

# Generating Quality Print Output from Flare or Blaze



## The sample project

- User assistance for Windows Paint



Matthew Ellison  
Consulting

## What we'll cover in this double session

- Session 1
  - Adding TOC, index, and glossary
  - Creating a custom TOC for print
  - Setting up and generating a PDF target
  - Creating and applying conditions
  - Customizing styles for print output
- Session 2
  - Setting up auto-numbering for headings
  - Setting up and inserting cross-references
  - Setting up page layouts
  - Configuring chapter and section breaks

Matthew Ellison  
Consulting

## Adding TOC, index, and glossary

- You have to create topics for your TOC, index and glossary
- Why do I have to do this?
  - Because Flare/Blaze does not automatically create print versions of your TOC, index and glossary
  - So that you can control the presentation of these items

Matthew Ellison |  
Consulting

## To add TOC, index, and glossary

1. Create three new topics
2. Insert the appropriate **Proxy** into each topic:
  - TOC
  - Index
  - Glossary
3. [Use the styles p.TOC1, p.TOC2, etc. to control the formatting of the TOC]

Hands-on Practice

Matthew Ellison |  
Consulting

## Creating a custom TOC for print

- Why would I want to do this?
  - More flexibility
  - May need different hierarchy and sequence of topics
  - May want to exclude specific topics (TOC defines what is included in print)

### Master TOC

<input type="checkbox"/>	<input type="checkbox"/>	Paint Overview
<input type="checkbox"/>	<input type="checkbox"/>	Common tasks
<input type="checkbox"/>	<input type="checkbox"/>	Creating Pictures
<input type="checkbox"/>	<input type="checkbox"/>	Drawing a straight line
<input type="checkbox"/>	<input type="checkbox"/>	Drawing a curved line
<input type="checkbox"/>	<input type="checkbox"/>	Drawing a freeform line
<input type="checkbox"/>	<input type="checkbox"/>	Drawing a rectangle or square
<input type="checkbox"/>	<input type="checkbox"/>	Drawing an ellipse or circle
<input type="checkbox"/>	<input type="checkbox"/>	Working with color
<input type="checkbox"/>	<input type="checkbox"/>	Help Viewer

### Print TOC

<input type="checkbox"/>	<input type="checkbox"/>	Title Page
<input type="checkbox"/>	<input type="checkbox"/>	Table of Contents
<input type="checkbox"/>	<input checked="" type="checkbox"/>	Getting Started
<input type="checkbox"/>	<input type="checkbox"/>	Paint Overview
<input type="checkbox"/>	<input type="checkbox"/>	Setting the default foreground and back
<input type="checkbox"/>	<input type="checkbox"/>	Painting with a brush
<input type="checkbox"/>	<input type="checkbox"/>	Drawing a straight line
<input type="checkbox"/>	<input type="checkbox"/>	Filling an area or object with color
<input type="checkbox"/>	<input type="checkbox"/>	Drawing a curved line
<input type="checkbox"/>	<input type="checkbox"/>	Creating more advanced pictures
<input type="checkbox"/>	<input type="checkbox"/>	More ways of working with color

## To create a custom TOC for print

1. Create a new TOC by copying and pasting the master TOC
2. Edit the new TOC as required:
  - Delete items not required for print
  - Add required new headings
  - Reorder items
3. [Select this new TOC in print targets]

Hands-on Practice

Matthew Ellison  
Consulting

## Setting up and generating a PDF target

- A **Target** is a specific output
- Key settings for PDF target:
  - Basic:
    - Output type (PDF)
    - Master TOC
    - Output File (name)
  - [Conditional Text]
  - Printed Output:
    - Use TOC depth for heading levels
    - Inject headings for unlinked books in TOC

Matthew Ellison  
Consulting

## To set up and generate a PDF target

1. Add a new target to the project
2. Set up the required target settings  
(see previous slide)
3. Generate the target

Hands-on Practice

Matthew Ellison  
Consulting

## Creating and applying conditions

- Why would I want to do this?
  - Some text within topics may not be appropriate for print output
  - You may wish to exclude some screenshots from print output
  - You may wish to exclude hyperlink text
  - You may wish to add print-specific text within topics

Matthew Ellison  
Consulting

## It is useful to be able to apply conditions to:

- Inline text
- Individual paragraphs
- Groups of paragraphs
- Images  
(can be excluded throughout project)
- Topics (to ensure hyperlinks and cross-references are removed)
- Folders  
(all topics within folder inherit condition)

Matthew Ellison  
Consulting

## To create and apply conditions

1. Add conditions to the Default condition tag set:
  - ScreenOnly
  - PrintOnly
2. Apply the ScreenOnly condition to the "Common Tasks" topic
3. List the dependencies for the Common Tasks topic
4. Remove the hyperlinks to the "Common Tasks" topic

Hands-on Practice

Matthew Ellison  
Consulting

## To create and apply conditions

5. Create a "Print Only" folder and apply the PrintOnly condition to it
6. Move these topics into the "Print Only" folder:
  - Table of Contents, Index, and Glossary
  - Title Page
7. Apply the PrintOnly condition to the "Paint Main Screen" image

Hands-on Practice

Matthew Ellison  
Consulting



## Customizing styles for print output

- Why would I want to do this?
  - You may wish to use different fonts, colors, and layouts for print output
  - You may wish to transform cross-references to include page or section numbers

### Painting with a brush

Painting with a brush enables you to add solid strokes of color.

#### To paint with a brush

1. In the toolbox, click Brush .
2. Below the toolbox, click a brush shape.
3. To paint, **drag** the pointer over the image.



Notes

### 1.3.1 Painting with a brush

Painting with a brush enables you to add solid strokes of color.

#### To paint with a brush

1. In the toolbox, click Brush .
2. Below the toolbox, click a brush shape.
3. To paint, drag the pointer over the image.



Notes

## Medium-specific styles

Flare's Stylesheet Editor

Stylesheet viewed in text editor

```
@media print
{
  h1
  {
    mc-auto-number-position: inside-he
    mc-auto-number-offset: 0pt;
    font-size: 18pt;
    border-top: solid 2px;
    mc-auto-number-format: 'Chapter {
    font-family: Verdana, Arial, Helve
  }
  h2
```

## Default font size mappings for print

Flare/Blaze Size	Default Print Size
80%	9.5pt
90%	11pt
100%	12pt
110%	13pt
10px	7.5pt
12px	9pt
14px	10.5pt

Matthew Ellison  
Consulting

## Some suggested print style settings

Element	Suggested Settings and Notes
body	<code>color: black</code> <code>font-size: 11pt</code> <code>font-family: a serif font</code> These settings are inherited by all other elements
h1	<code>page-break-before: always</code>
h1-h6	<code>font-family: a sans-serif font</code> <code>font-size: pt values</code>
a (links)	<code>color: black</code> <code>text-decoration: none</code>

Matthew Ellison  
Consulting

## To customize styles for print output

1. Open styles.css in the **Simplified** Stylesheet Editor
  2. Set the Medium to **print**
  3. Change the body element to Times New Roman, 11pt
  4. Change all headings to black
  5. If time, indent all list items by 42pt
- Remember to set the medium back to **default** when you have finished

Hands-on Practice

Matthew Ellison  
Consulting

## Questions?

Matthew Ellison  
matthew@ellisonconsulting.com

The Conference for  
Software User Assistance



Matthew Ellison  
Consulting

## Generating Quality Print Output from Flare or Blaze Part 2

Matthew Ellison  
matthew@ellisonconsulting.com

The Conference for  
Software User Assistance



Matthew Ellison  
Consulting

### What we'll cover in part 2

- Setting up auto-numbering for headings
- Setting up and inserting cross-references
- Setting up page layouts
- Configuring chapter and section breaks

Matthew Ellison  
Consulting

## Setting up auto-numbering for headings

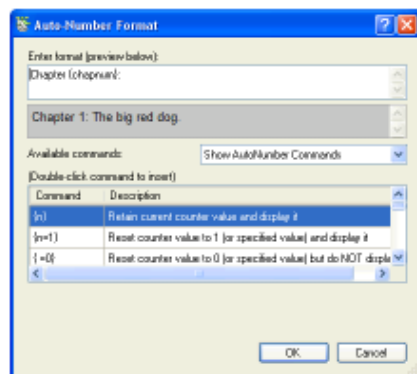
- Why would you want to do this?
  - Auto-numbering is useful for cross-reference purposes in printed documentation

See section 2.3 (Painting with a brush)

Matthew Ellison  
Consulting

## Auto-number format

- Flare/Blaze has a special CSS property:
  - `mc-auto-number-format`
- Set the value to a combination of text and special commands



Matthew Ellison  
Consulting

## Examples of auto-number formats

Element	Auto-number format	Example
h1	{chapnum}	1
h2	CH:{chapnum}.{n+}.{ =0}	1.1
h3	CH:{chapnum}.{n}.{n+}	1.1.1
p. figurecaption	CF:Figure {chapnum}-{n+}:	Figure 1-1:

Matthew Ellison  
Consulting

## To set up auto-numbering for headings

1. Open styles.css in the **Simplified** Stylesheet Editor

2. Set the auto-number formats

- h1: **Chapter** {chapnum}:
- h2: **CH:**{chapnum}.{n+}

Remember to insert a space at the end of each of these formats

Hands-on Practice

Matthew Ellison  
Consulting

## Setting up and inserting cross-references

- What are cross-references?
  - Links that can be presented differently using medium-specific styles

Screen-based Help:

See [style sheets](#)

Print-based PDF:

See style sheets on page 32

- Always use cross-references instead of regular hyperlinks if you want to be able to transform the links for print

Matthew Ellison  
Consulting

## Useful cross-reference format commands

- `{paratext}`  
The title of the target topic
- `{paranum}`  
The auto-number text of the target topic
- `{pageref}`  
The "context-sensitive" page reference of the target topic
- `{b}{/b} {i}{/i}`  
Formatting

Matthew Ellison  
Consulting

## Some sample cross-reference formats

- See “({paratext})” {pageref}
  - See “Drawing a straight line” on page 4
- Section {paranum} ({paratext}) {pageref}
  - Section 1.3.2 (Drawing a straight line) above
- See {i}{paratext}{/i} ({paranum})
  - See *Drawing a straight line* (1.3.2)

Matthew Ellison  
Consulting

## To set up and insert cross-references

1. Change the **MadCap | xref** style to the required format for the **default** and **print** media
2. Insert a cross-reference within “Drawing a curved line” to “Drawing a straight line”
3. In the XML Editor, change the Medium to **print**
4. Update Cross-References to see the correct format within the XML Editor

Hands-on Practice

Matthew Ellison  
Consulting

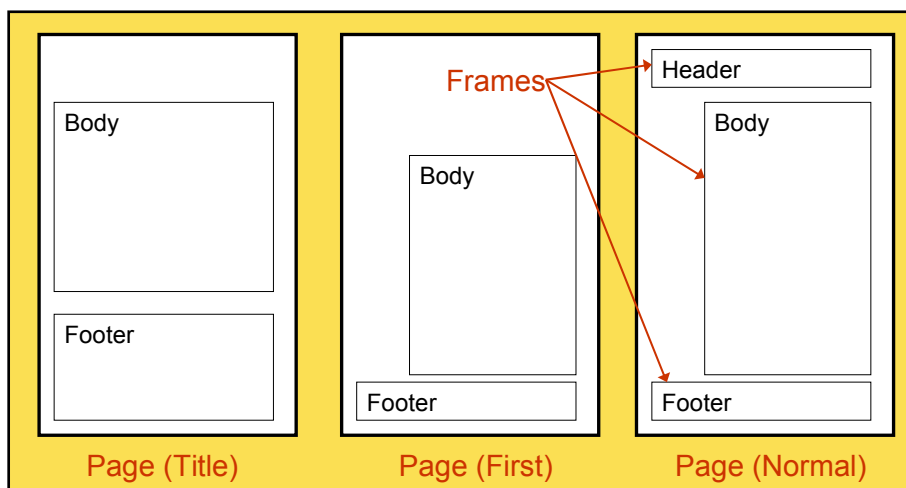


## Setting up page layouts

- Why do I need to do this?
  - Page layouts enable you to specify page settings such as paper size and margins
  - You can specify different page settings for left, right, first, and title pages

Matthew Ellison  
Consulting

## Anatomy of a page layout



Page Layout (default.flpgl)

Matthew Ellison  
Consulting

## Tips for setting up page layouts

- Set the page size and page margins in **Page Properties**
- Body frames are placeholders for topic content
- You can edit Header and Footer frames (press F2)
- Use variables for page numbers and running headings
- Position and anchor frames so that they are independent of page size

Matthew Ellison  
Consulting

## To set up page layouts

1. Add a page layout to the project (import an existing page layout)
2. Change the left margin setting of the normal page
3. Add the page number to the footer
4. Create a new first page by duplicating and editing the normal page
5. Set as **Project Page Layout**

Hands-on Practice

Matthew Ellison  
Consulting

## Configuring chapter and section breaks

- Why would I want to do this?
  - Enables you to use chapter and section numbering
  - Chapter breaks enable you to specify different first and title page formats
  - Chapter breaks enable you to select different Page Layouts for specific chapters
  - Chapter breaks enable you to force new chapters to start on an odd page
- Add chapter and section breaks to the print TOC

Matthew Ellison  
Consulting

## To add and configure chapter breaks

1. Open the print TOC
2. Edit the Properties of the first chapter break item:
  - Select **Start a new Chapter**
  - Select **Page Type** for first page in chapter
  - Set the required **Page Number** format
3. Edit the properties of all other chapter break items

Hands-on Practice

Matthew Ellison  
Consulting

## Final questions?

Matthew Ellison  
matthew@ellisonconsulting.com

The Conference for  
Software User Assistance



Matthew Ellison  
Consulting